

..... TRS-RenTelco

..... *Equipment Now. Service Beyond.*



••••• TRS-RenTelco



TRS-RenTelco is one of the largest test equipment rental and leasing companies in North America

Reasons to Rent & Lease Equipment

- Peak Periods
- Short-term Contracts
- Short-term Projects
- Temporary Replacement
- Fast Delivery Requirements
- System Delays
- Emergencies
- Evaluation
- Budget Management
- New Projects
- Unscheduled Projects
- Lead Time Issues
- Capital Constraints
- Asset Management
- Project Management
- Special Events
- Seasonal Fluctuations
- Unbudgeted Projects
- Project Expansions

••••• Why Choose TRS-RenTelco?

- Our Products
 - \$300 MM (and growing) inventory
 - Over 5,000 models to choose from
 - Telecommunication equipment, analyzers, oscilloscopes, signal generators, power supplies, recorders and much more!

Why Choose TRS-RenTelco?

- **Our Facility**

- 120,000 sq. ft. facility located on the grounds of the Dallas-Fort Worth International Airport
- State-of-the-art laboratory with metrologists and certified technicians
- Supported by a full-service inventory center located in Montreal, Canada
- Same day shipment of most orders with next day delivery to customer site
- International Shipping to over 50 countries



••••• Why Choose TRS-RenTelco?

- Our Flexible Financial Options
 - Rent
 - Rent with Purchase Option
 - Lease
 - Technology Investment Program (TIP)
 - Purchase (new and previously rented)
 - Purchase Financing
 - Trade-in Program
 - Program Combinations



••••• Test & Measurement Equipment

- Amplifiers
- Analyzers
- Antenna Alignment
- Cellular Phone Test
- Counters
- Data Loggers
- Fiber Optic Test
- Generators
- Logic Analyzers
- Meters
- Microwave Components
- Oscilloscopes
- Power Sources
- Recorders
- SONET
- Telecommunications Test
- Wireless Test
- Industrial Test

••••• Test & Measurement Manufacturers

- Acterna
- Advantest
- Agilent
- Alcoa Fujikura
- Ando
- Andrew (Grayson)
- Anritsu-Wiltron
- Astro-Med
- Dranetz-BMI
- Exfo
- Fluke
- Fujitsu
- LeCroy
- Megger
- Nettest
- Rohde & Schwarz
- Schaffner
- Spirent
- Tektronix
- Wavetek
- and many more...

••••• TRS-RenTelco Provides

- **High Quality Standards**
 - ISO registration, Z540 compliant
 - In-house warranty repair station for most major manufacturers
 - On-time and ready to work, right out of the box
- **Customer Focused Services**
 - Customer Support Center on duty 24/7/365
 - Asset Management
 - Customized Reports
 - Calibration Services



Sample Customer Reports

- Equipment on Rent
- Purchase Order Expiration
- Returned Assets
- Order Tracking
- Trouble Call
- And more

All Reports can be customized to meet your individual needs. "Customer defined" data fields can be used to capture and report your unique information



Our Customer Web Interface (CWI) online reporting capabilities allows you to access your company reports from your own computer!

••••• TRS-RenTelco

Supporting our Customers, one call does it all!

Within hours of placing your order the equipment is on its way to you.

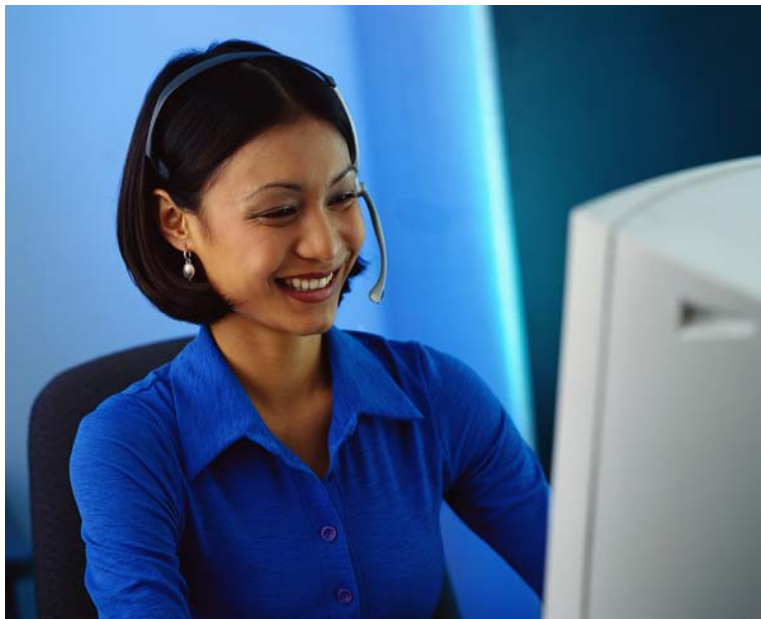


... Our Customers...to name a few



••••• TRS-RenTelco

At TRS-RenTelco we provide the technology solutions you need, when you need them, for as long as you need them, at an excellent value. *Equipment Now. Service Beyond.*



Call a TRS-RenTelco representative now! We look forward to servicing all of your test equipment needs!

800-874-7123

